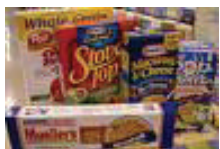


Important Recycling Changes!!

All Sussex County Residents & Businesses Can Now Recycle:



Chipboard: Food, tissue & other gray or white paper-board can be included with bundled & tied corrugated cardboard. No wax coated material (i.e. Juice Boxes)

Plastic Containers: 



All Rinsed, plastic containers with codes between 1 (PET) through 7 (OTHER) can be included with commingled containers. No plastic toys.



2010 Recycling & Bulk Pickup Schedule



BULK PICKUP -

HOUSEHOLD ITEMS ONLY!

Stoves, refrigerators, furniture, carpets, etc., but not normal household garbage. Building Material & Construction Debris will not be picked up!

WEEK BEGINNING:

JANUARY 17th	JULY 18th
FEBRUARY 14th	AUGUST 15th
MARCH 14th	SEPTEMBER 19th
APRIL 18th	OCTOBER 17TH
MAY 16th	NOVEMBER 14TH
JUNE 20th	DECEMBER 19TH

Bulk Pickup is provided monthly for all residential dwellings located on roads regularly serviced by garbage haulers.

Bulk pickup will be on the regular garbage pickup day by Waste Management for your home/street.

If you have any questions regarding bulk pickup, please contact the municipal building at 973-383-7025, Ext. 21 or Waste Management at 973-383-7480, Ext. 7237.

RECYCLING

Curbside Recycling Pickup is available for all residential dwellings located on roads regularly serviced by garbage haulers the **first** and **third Monday** of each month.

Material must be placed at the curbside the evening before scheduled pickup — regardless of your garbage contractor.

Tin, Aluminum, Glass & Plastic may be commingled. Cardboard must be flattened & tied. The following items may be recycled:

- Aluminum & Tin Cans
- Glass Bottles & Jars - Clear, Amber, & Green
- Plastic Containers (#1 through #7)
- Corrugated Cardboard (flattened & tied)
- Chipboard (flattened & tied)
- Brown paper bags (bundled & tied)
- Newspapers (bundled & tied)

Recyclable Items must be placed at the curbside in a reusable container. Items left in plastic or paper bags will not be picked up.

Desktop paper (only) may be brought to the container located at the back of the Municipal Building Parking lot at any time.

RECYCLING SCHEDULE:

2010

JANUARY	4th & 18th
FEBRUARY	1st & 15th
MARCH	1st & 15th
APRIL	5th & 19th
MAY	3rd & 17th
JUNE	7th & 21st
JULY	5th & 19th
AUGUST	2nd & 16th
SEPTEMBER	6th & 20th
OCTOBER	4th & 18th
NOVEMBER	1st & 15th
DECEMBER	6th & 20th

PLEASE PLACE RECYCLABLES CURBSIDE ON SUNDAY EVENING!!

HOLIDAY SCHEDULE:

Waste Management may or may not observe all holidays, when in doubt, please put your recyclables out for the scheduled day!

COLLECTION WILL TAKE PLACE ON THE NEXT DAY

IF

A HOLIDAY IMPACTS PICK-UP